

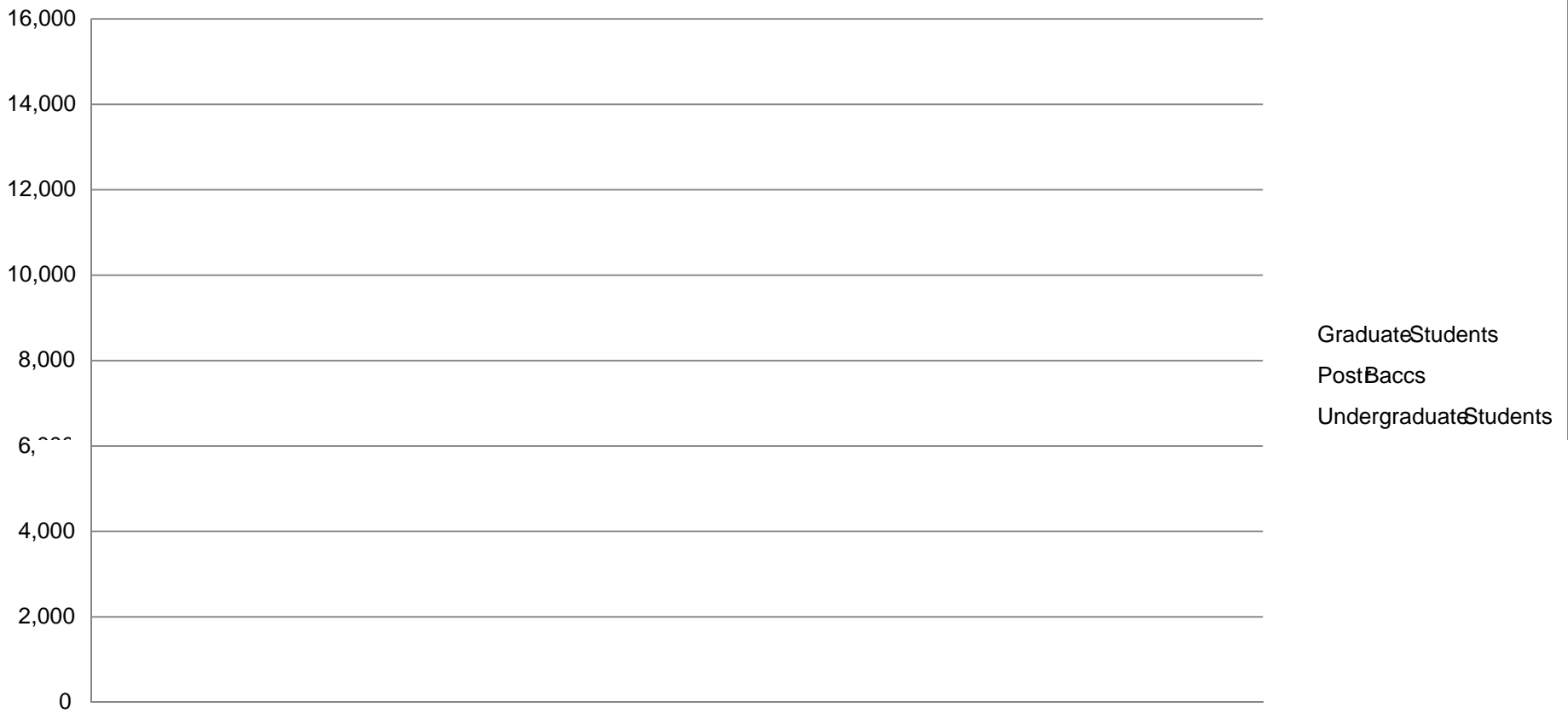
LAMAR UNIVERSITY

A MEMBER OF
THE TEXAS STATE UNIVERSITY SYSTEM
BEAUMONT, TEXAS

Mini Profile
2006 2012

OFFICE OF INSTITUTIONAL RESEARCH & REPORTING

University Headcount by Level Fall 2000 2012



Undergraduate	N	%	N	%	N	%	N	%	N	%	N	%	N	%
FullTime	6,299	70.6%	6,371	72.4%	6,264	69.7%	8,661	71.5%	7,055	70.0%	7,059	66.8%	7,019	66.6%
PartTime	2,620	29.4%	2,430	27.6%	2,729	30.3%	742	28.5%	3,027	30.0%	3,504	33.2%	3,518	33.4%
TOTAL	8,919	100.0%	8,801	100.0%	8,993	100.0%	9,403	100.0%	10,082	100.0%	10,563	100.0%	10,537	100.0%

by Age

Age Group	Fall 2006		Fall 2007		Fall 2008		Fall 2009		Fall 2010		Fall 2011		Fall 2012	
	N	%	N	%	N	%	N	%	N	%	N	%	N	%
17 & Under	391	3.9%	451	4.4%	497	3.7%	609	4.4%	1,023	7.3%	669	4.8%	475	3.3%
18	1,375	13.9%	1,303	12.8%	1,319	9.9%	1,402	10.0%	3,373	24.2%	1,438	10.5%	1,500	10.5%
19-21	3,298	33.3%	3,363	32.9%	3,418	25.7%	3,614	25.8%	2,622	18.8%	3,505	25.0%	3,459	24.2%
22-24	1,977	20.0%	2,019	19.8%	2,194	16.5%	2,276	16.3%	1,567	11.2%	2,245	16.0%	2,223	15.6%
25-30	1,402	14.2%	1,441	14.1%	2,144	16.1%	2,276	16.2%	2,022	14.5%	2,332	16.6%	2,409	16.9%
31-35	490	4.9%	538	5.3%	1,134	8.5%	1,225	8.6%	1,145	8.2%	1,254	8.9%	1,436	10.0%
36-50	814	8.2%	900	8.8%	2,139	16.1%	2,208	16.1%	1,905	13.6%	2,119	15.1%	2,336	16.3%
51+	159	1.6%	198	1.9%	435	3.3%	388	2.8%	307	2.2%	409	2.9%	451	3.2%
TOTAL	9,906	100.0%	10,213	100.0%	13,280	100.0%	13,992	100.0%	13,969	100.0%	14,021	100.0%	14,289	100.0%

by Residency

Residency Category	Fall 2006		Fall 2007		Fall 2008		Fall 2009		Fall 2010		Fall 2011		Fall 2012	
	N	%	N	%	N	%	N	%	N	%	N	%	N	%
Texas	9,233	93.2%	9,439	92.4%	12,393	93.3%	12,631	93.1%	13,079	93.6%	13,117	93.6%	13,156	92.1%
Out of State	172	1.7%	174	1.7%	278	2.1%	270	1.9%	277	2.0%	403	2.9%	523	3.7%
Out of Country	501	5.1%	600	5.9%	609	4.6%	696	5.0%	613	4.4%	501	3.6%	610	4.3%
TOTAL	9,906	100.0%	10,213	100.0%	13,280	100.0%	13,992	100.0%	13,969	100.0%	14,021	100.0%	14,289	100.0%

by Semester Credit Hour Load

SCH	N	%	N	%	N	%	N	%	N	%	N	%	N	%
<3	10	0.1%	16	0.2%	13	0.1%	17							

Undergraduate	N	%	N	%	N	%	N	%	N	%	N	%	N	%
White	4,989	59.2%	4,854	58.1%	4,726	55.3%	884	53.7%	5,043	52.7%	5,050	51.3%	4,727	48.9%
Black	2,238	26.5%	2,269	27.1%	2,482	29.0%	752	30.3%	2,882	30.1%	3,096	31.5%	3,018	31.2%
Hispanic	562	6.7%	577	6.9%	623	7.3%	702	7.7%	767	8.0%	805	8.2%	949	9.8%
Other	641	7.6%	659	7.9%	719	8.4%	752	8.3%	885	9.2%	888	9.0%	980	10.1%
TOTAL	8,430	100.0%	8,359	100.0%	8,550	100.0%	0969	100.0%	9,577	100.0%	9,839	100.0%	9,674	100.0%

Post Baccalaureate	N	%	N	%	N	%	N	%	N	%	N	%	N	%
White	278	61.8%	249	52.1%	237	49.4%	268	48.6%	278	50.6%	386	49.5%	433	47.6%
Black	120	26.7%	128	26.8%	143	29.8%	177	32.1%	154	28.1%	226	29.0%	263	28.9%
Hispanic	19	4.2%	29	6.1%	26	5.4%	22	4.0%	29	5.3%	56	7.2%	121	13.3%
Other	33	7.3%	36	7.5%	37	7.7%	42	7.6%	44	8.0%	56	7.2%	46	5.1%
TOTAL	450	100.0%	478	100.0%	480	100.0%	550	100.0%	549	100.0%	780	100.0%	909	100.0%

Masters	N	%	N	%	N	%	N	%	N	%	N	%	N	%
White	358	40.8%	579	44.8%	2,655	63.6%	2,532	59.6%	1,838	49.7%	1,838	57.5%	1,993	58.5%
Black	69	7.9%	107	8.3%	365	8.7%	439	10.3%	378	10.2%	459	14.4%	513	15.1%
Hispanic	25	2.9%	79	6.1%	473	11.3%	494	11.6%	355	9.6%	307	9.6%	397	11.7%
Other	1,993	52.5%	526	47.6%	526	59.6%	526	59.6%	526	59.6%	526	59.6%	526	59.6%

	N	%	N	%	N	%	N	%	N	%	N	%	N	%
Undergraduate	8,430	85.4%	8,359	81.8%	8,550	46.1%	9,096	65.0%	9,577	68.6%	9,840	70.2%	9,674	67.7%
PostBaccalaureate	450	4.6%	442	4.3%	443	3.8%	509	3.6%	505	3.6%	570	4.1%	863	6.0%
Masters	877	8.9%	1,291	12.6%	4,173	31.4%	4,							



Art & Sciences Student Enrollment Profile*

Student Enrollment

by Part Time and Full Time Status

Undergraduate	Fall 2006		Fall 2007		Fall 2008		Fall 2009		Fall 2010		Fall 2011		Fall 2012	
	N	%	N	%	N	%	N	%	N	%	N	%	N	%
Full Time	2,159	70.7%	2,184	73.1%	2,108	69.8%	2,601	70.7%	2,548	67.9%	3,554	63.0%	3,441	64.1%
Part Time	893	29.3%	805	26.9%	912	30.2%	935	29.3%	1,207	32.1%	2,090	37.0%	1,928	35.9%
TOTAL	3,052	100.0%	2,989	100.0%	3,020	100.0%	3,536	100.0%	3,755	100.0%	5,644	100.0%	5,369	100.0%
Graduate														
Full Time	152	67.3%	163	70.0%	136	65.7%	146	61.9%	101	44.5%	160	62.5%	230	71.4%
Part Time	74	32.7%	70	30.0%	71	34.3%	86	38.1%	126	55.5%	96	37.5%	92	28.6%
TOTAL	226	100.0%	233	100.0%	207	100.0%	232	100.0%	227	100.0%	256	100.0%	322	100.0%
Total														
Full Time	2,311	70.5%	2,347	72.8%	2,244	69.5%	2,747	70.2%	2,649	66.5%	3,714	62.9%	3,671	64.5%
Part Time	967	29.5%	875	27.2%	983	30.5%	1,021	29.8%	1,333	33.5%	2,186	37.1%	2,020	35.5%
TOTAL	3,278	100.0%	3,222	100.0%	3,227	100.0%	3,768	100.0%	3,982	100.0%	5,900	100.0%	5,691	100.0%

by Ethnicity

Undergraduate	N	%	N	%	N	%	N	%	N	%	N	%	N	%
FullTime	1,089	79.3%	1,054	78.0%	1,102	80.3%	1,068	78.6%	962	76.8%	927	77.7%	924	74.7%
PartTime	285	20.7%	297	22.0%	270	19.7%	291	21.4%	290	23.2%	266	22.3%	313	25.3%
TOTAL	1,374	100.0%	1,351	100.0%	1,372	100.0%	1,359	100.0%	1,252	100.0%	1,193	100.0%	1,237	100.0%

Graduate	N	%	N	%	N	%	N	%	N	%	N	%	N	%
FullTime	55	55.0%	55	59.1%	45	49.5%	62	51.2%	87	60.0%	74	50.7%	77	51.7%
PartTime	45	45.0%	38	40.9%	46	50.5%	59	48.8%	58	40.0%	72	49.3%	72	48.3%
TOTAL	100	100.0%	93	100.0%	91	100.0%	121	100.0%	145	100.0%	146	100.0%	149	100.0%

Total	N	%	N	%	N	%	N	%	N	%	N	%	N	%
FullTime	1,144	77.6%	1,109	76.8%	1,147	78.4%	1,130	76.4%	1,049	75.1%	1,001	74.8%	1,001	72.2%
PartTime	330	22.4%	335	23.2%	316	21.6%	350	23.6%	348	24.9%	338	25.2%	385	27.8%
TOTAL	1,474	100.0%	1,444	100.0%	1,463	100.0%	1,480	100.0%	1,397	100.0%	1,339	100.0%	1,386	100.0%

by Age

Age Group	Fall 2006		Fall 2007		Fall 2008		Fall 2009		Fall 2010		Fall 2011		Fall 2012	
	N	%	N	%	N	%	N	%	N	%	N	%	N	%
17 & Under	8	0.5%	8	0.6%	10	0.7%	15	1.0%	7	0.5%	5	0.4%	9	0.6%
18	191	13.0%	168	11.6%	181	12.4%	159	10.7%	142	10.2%	148	11.1%	143	10.3%
19-21	572	38.8%	571	39.5%	572	39.1%	554	37.4%	466	33.4%	442	33.0%	464	33.5%
22-24	347	23.5%	363	25.1%	375	25.6%	380	25.7%	391	28.0%	325	24.3%	329	23.7%
25-30	213	14.5%	205	14.2%	205	14.0%	229	15.5%	229	16.4%	239	17.8%	241	17.4%
31-35	57	3.9%	61	4.2%	48	3.3%	72	4.9%	70	5.0%	78	5.8%	78	5.6%
36-50	81	5.5%	62	4.3%	66	4.5%	60	4.1%	76	5.4%	88	6.6%	104	7.5%
51+	5	0.3%	6	0.4%	6	0.4%	11	0.7%	16	1.1%	14	1.0%	18	1.3%
TOTAL	1,474	100.0%	1,444	100.0%	1,463	100.0%	1,480	100.0%	1,397	100.0%	1,339	100.0%	1,386	100.0%

by Residency

Residency Category	Fall 2006		Fall 2007		Fall 2008		Fall 2009		Fall 2010		Fall 2011		Fall 2012	
	N	%	N	%	N	%	N	%	N	%	N	%	N	%
Texas	1,440	97.7%	1,405	97.3%	1,414	96.7%	1,417	95.7%	1,332	95.3%	1,265	94.5%	1,282	92.5%
Out of State	7	0.5%	10	0.7%	15	1.0%	20	1.4%	23	1.6%	22	1.6%	16	1.2%
Out of Country	27	1.8%	29	2.0%	34	2.3%	43	2.9%	42	3.0%	52	3.9%	88	6.3%
TOTAL	1,474	100.0%	1,444	100.0%	1,463	100.0%	1,480	100.0%	1,397	100.0%	1,339	100.0%	1,386	100.0%

SCH	N	%	N	%	N	%	N	%	N	%	N	%	N	%
<3	1	0.1%	3	0.2%	1	0.1%	3	0.2%	1	0.1%	5	0.4%	7	0.5%
3 to 5	57	3.9%	51	3.5%	59	4.0%	57	3.9%	61	4.4%	77	5.8%	96	6.9%
6 to 8	143	9.7%	147	10.2%	144	9.8%	177	11.9%						

Undergraduate	N	%	N	%	N	%	N	%	N	%	N	%	N	%
FullTime	844	64.2%	858	66.3%	789	60.5%	956	69.2%	997	68.1%	933	55.6%	914	51.4%
Partt														



Age Group	N	%	N	%	N	%	N	%	N	%	N	%	N	%
17 & Under	3	0.2%	8	0.4%	6	0.1%	9	0.2%	2	0.0%	7	0.2%	6	0.1%



College of Engineering Student Enrollment Profile

Student Enrollment

by Part Time and Full Time Status

Undergraduate	Fall 2006		Fall 2007		Fall 2008		Fall 2009		Fall 2010		Fall 2011		Fall 2012	
	N	%	N	%	N	%	N	%	N	%	N	%	N	%
Full Time	612	76.5%	719	82.2%	781	82.2%	884	84.4%	829	81.4%	890	78.7%	965	78.0%
Part Time	188	23.5%	156	17.8%	169	17.8%	164	15.6%	189	18.6%	241	21.3%	272	22.0%
TOTAL	800	100.0%	875	100.0%	950	100.0%	1,048	100.0%	1,018	100.0%	1,131	100.0%	1,237	100.0%

Graduate														
	Fall 2006		Fall 2007		Fall 2008		Fall 2009		Fall 2010		Fall 2011		Fall 2012	
	N	%	N	%	N	%	N	%	N	%	N	%	N	%
Full Time	232	75.8%	299	77.5%	337	77.5%	390	75.7%	285	63.6%	171	61.7%	159	71.0%
Part Time	74	24.2%	87	22.5%	98	22.5%	125	24.3%	163	36.4%	106	38.3%	65	29.0%
TOTAL	306	100.0%	386	100.0%	435	100.0%	515	100.0%	448	100.0%	277	100.0%	224	100.0%

Total														
	Fall 2006		Fall 2007		Fall 2008		Fall 2009		Fall 2010		Fall 2011		Fall 2012	
	N	%	N	%	N	%	N	%	N	%	N	%	N	%
Full Time	844	76.3%	1,018	80.7%	1,118	80.7%	1,274	81.5%	1,114	76.0%	1,061	75.4%	1,124	76.9%
Part Time	262	23.7%	243	19.3%	267	19.3%	289	18.5%	352	24.0%	347	24.6%	337	23.1%
TOTAL	1,106	100.0%	1,261	100.0%	1,385	100.0%	1,563	100.0%	1,466	100.0%	1,408	100.0%	1,461	100.0%

by Ethnicity

Ethnicity	Fall 2006		Fall 2007		Fall 2008		Fall 2009		Fall 2010		Fall 2011		Fall 2012	
	N	%	N	%	N	%	N	%	N	%	N	%	N	%
White	502	45.4%	541	42.9%	568	41.0%	599	38.3%	581	39.6%	634	45.0%	612	41.9%
Black	161	14.6%	176	14.0%	203	14.7%	236	15.1%	228	15.6%	250	17.8%	240	16.4%
Hispanic	81	7.3%	90	7.1%	103	7.4%	113	7.2%	125	8.5%	131	9.3%	169	11.6%
Other	362	32.7%	454	36.0%	511	36.9%	615	39.3%	532	36.3%	393	27.9%	440	30.1%
TOTAL	1,106	100.0%	1,261	100.0%	1,385	100.0%	1,563	100.0%	1,466	100.0%	1,408	100.0%	1,461	100.0%

Classification	Fall 2006		Fall 2007		Fall 2008		Fall 2009		Fall 2010		Fall 2011		Fall 2012	
	N	%	N	%	N	%	N	%	N	%	N	%	N	%
FTIC	179	16.2%	160	12.7%	192	13.9%	202	12.9%	204	13.9%	207	14.7%	280	19.2%
Other FR	90	8.1%	100	7.9%	104	7.5%	131	8.4%	110	7.5%	147	10.4%	160	11.0%
Sophomore	158	14.3%	175	13.9%	162	11.7%	176	11.3%	167	11.4%	204	14.5%	211	14.4%
Junior	137	12.4%	146	11.6%	157	11.3%	180	11.5%	204	13.9%	190	13.5%	214	14.6%
Senior	220	19.9%	273	21.6%	314	22.7%	332	21.2%	310	21.1%	355	25.2%	347	23.8%
PostBacc	16	1.4%	21	1.7%	21	1.5%	27	1.7%	23	1.6%	28	2.0%	25	1.7%
Masters	275	24.9%	354	28.1%	406	29.3%	464	29.7%	380	25.9%	207	14.7%	156	10.7%
Doctoral	31	2.8%	32	2.5%	29	2.1%	51	3.3%	68	4.6%	70	5.0%	68	4.7%
TOTAL	1,106	100.0%	1,261	100.0%	1,385	100.0%	1,563	100.0%	1,466	100.0%	1,408	100.0%	1,461	100.0%

Age Group	N	%	N	%	N	%	N	%	N	%	N	%	N	%
17 & Under	3	0.3%	8	0.6%	5	0.4%	10	0.6%	12	0.8%	9	0.6%	15	1.0%
18	171	15.5%	147	11.7%	175	12.6%	186	11.9%	163	11.1%	188	13.4%	206	14.1%
19-21	315	28.5%	392	31.1%	398	28.7%	446	28.5%	374	25.5%	414	29.4%	466	31.9%
22-24	306	27.7%	385	30.5%	470	33.9%	496	31.7%	453	30.9%	331	23.5%	324	22.2%
25-30	208	18.8%	226	17.9%	219	15.8%	300	19.2%	309	21.1%	307	21.8%	281	19.2%
31-35	47	4.2%	46	3.6%	51	3.7%	45	2.9%	71	4.8%	64	4.5%	81	5.5%
36-50	50	4.5%	53	4.2%	60	4.3%	72	4.6%	76	5.2%	79	5.6%	70	4.8%
51														



by Age

Age Group	Fall 2006		Fall 2007		Fall 2008		Fall 2009		Fall 2010		Fall 2011		Fall 2012	
	N	%	N	%	N	%	N	%	N	%	N	%	N	%
17 & Under	4	0.5%	7	0.8%	7	0.8%	7	0.7%	4	0.4%	5	0.5%	6	0.6%
18	135	15.8%	134	16.3%	120	14.0%	146	15.0%	138	12.9%	120	11.4%	140	13.2%
19-21	343	40.1%	333	40.4%	372	43.3%	394	40.5%	428	40.1%	428	40.6%	417	39.5%
22-24	194	22.7%	172	20.9%	183	21.3%	224	23.0%	247	23.1%	245	23.2%	249	23.6%
25-30	91	10.6%	86	10.4%	96	11.2%	103	10.6%	128	12.0%	138	13.1%	118	11.2%
31-35	28	3.3%	29	3.5%	26	3.0%	29	3.0%	37	3.5%	47	4.5%	47	4.4%
36-50	45	5.3%	46	5.6%	48	5.6%	60	6.2%	69	6.5%	54	5.1%	61	5.8%
51+	16	1.9%	17	2.1%	8	0.9%	10	1.0%	17	1.6%	18	1.7%	19	1.8%
TOTAL	856	100.0%	824	100.0%	860	100.0%	973	100.0%	1,068	100.0%	1,055	100.0%	1,057	100.0%

by Residency

Residency Category	Fall 2006		Fall 2007		Fall 2008		Fall 2009		Fall 2010		Fall 2011		Fall 2012	
	N	%	N	%	N	%	N	%	N	%	N	%	N	%
Texas	818	95.6%	788	95.6%	811	94.3%	907	93.2%	996	93.3%	981	93.0%	985	93.2%
Out of State	36	4.2%	34	4.1%	45	5.2%	59	6.1%	66	6.2%	64	6.1%	60	5.7%
Out of Country	2	0.2%	2	0.2%	4	0.5%	7	0.7%	6	0.6%	10	0.9%	12	1.1%
TOTAL	856	100.0%	824	100.0%	860	100.0%	973	100.0%	1,068	100.0%	1,055	100.0%	1,057	100.0%



Age Group	N	%	N	%	N	%	N	%	N	%	N	%	N	%
17 & Under	338	20.6%	378	23.9%	437	27.4%	533	30.1%	446	26.8%	0	0.0%	0	0.0%
18	287	17.5%	257	16.3%	244	15.3%	309	17.4%	269	16.1%	0	0.0%	0	0.0%
19-21	479	29.2%	465	29.4%	423	26.5%	464	26.2%	449	26.9%	0	0.0%	0	0.0%
22-24	225	13.7%	208	13.2%	195	12.2%	149	8.4%	206	12.4%	0	0.0%	0	0.0%
25-30	165	10.1%	138	8.7%	155	9.7%	164	9.3%	142	8.5%	0	0.0%	0	0.0%
31-35	52	3.2%	46	2.9%	53	3.3%	65	3.7%	57	3.4%	0	0.0%	0	0.0%
36-50	83	5.1%	77	4.9%	73	4.6%	72	4.1%	82	4.9%	0	0.0%	0	0.0%
51+	11	0.7%	10	0.6%	17	1.1%	16	0.9%	16	1.0%	0	0.0%	0	0.0%
TOTAL	1,640	100.0%	1,579	100.0%	1,597	100.0%	1,772	100.0%	1,667	100.0%	0	0.0%	0	0.0%

Residency Category	N	%	N	%	N	%	N	%	N	%	N	%	N	%
Texas	1,601	97.6%	1,531	97.0%	1,561	97.7%	1,736	98.0%	1,618	97.1%	0	0.0%	0	0.0%
Out of State	26	1.6%	26	1.6%	20	1.3%	24	1.4%	38	2.3%	0	0.0%	0	0.0%
Out of Country	13	0.8%	22	1.4%	16	1.0%	12	0.7%	11	0.7%	0	0.0%	0	0.0%

University First Time in College Student Enrollment Profile

by College

College	Fall 2006		Fall 2007		Fall 2008		Fall 2009		Fall 2010		Fall 2011		Fall 2012		
	N	%	N	%	N	%	N	%	N	%	N	%	N	%	
A&S	502	33.6%	516	35.7%	515	35.3%	473	31.9%	861	53.9%	1,026	61.1%	976	56.8%	
BUS	204	13.6%	186	12.9%	204	14.0%	188	12.7%	168	10.5%	161	9.6%	165	9.6%	
EDU	132	8.8%	140	9.7%	147	10.1%	151	10.2%	171	10.7%	153	9.1%	140	8.2%	
EGR	179	12.0%	160	11.1%	192	13.2%	202	13.6%	209	13.1%	207	12.3%	280	16.3%	
FAC	137	9.2%	140	9.7%	128	8.8%	146	9.8%	154	9.6%	132	7.9%	156	9.1%	
GU	341	22.8%	302	20.9%	272	18.7%	325	21.9%	34	2.1%	0	0.0%	0	0.0%	
TOTAL	1,495	100.0%	1,444	100.0%	1,458	100.0%	1,485	100.0%	1,597	100.0%	1,679	100.0%	1,717	100.0%	

by Residency

Residency Category	Fall 2006		Fall 2007		Fall 2008		Fall 2009		Fall 2010		Fall 2011		Fall 2012		
	N	%	N	%	N	%	N	%	N	%	N	%	N	%	
Texas	1,473	98.5%	1,423	98.5%	1,429	98.0%	1,452	97.8%	1,556	97.4%	1,620	96.5%	1,587	92.4%	
Out of State	18	1.2%	10	0.7%	21	1.4%	24	1.6%	32	2.0%	45	2.7%	40	2.3%	
Out of Country	4	0.3%	11	0.8%	8	0.5%	9	0.6%	9	0.6%	14	0.8%	90	5.2%	
TOTAL	1,495	100.0%	1,444	100.0%	1,458	100.0%	1,485	100.0%	1,597	100.0%	1,679	100.0%	1,717	100.0%	

by Ethnicity

Ethnicity	Fall 2006		Fall 2007		Fall 2008		Fall 2009		Fall 2010		Fall 2011		Fall 2012		
	N	%	N	%	N	%	N	%	N	%	N	%	N	%	
White	711	47.6%	694	48.1%	658	45.1%	667	44.9%	752	47.1%	701	41.8%	587	34.2%	
Black	562	37.6%	546	37.8%	590	40.5%	603	40.6%	619	38.8%	715	42.6%	734	42.7%	
Hispanic	122	8.2%	106	7.3%	104	7.1%	124	8.4%	104	6.5%	133	7.9%	178	10.4%	
Asian	37	2.5%	39	2.7%	45	3.1%	34	2.3%	58	3.6%	45	2.7%	30	1.7%	
American Indian	5	0.3%	5	0.3%	3	0.2%	10	0.7%	11	0.7%	17	1.0%	10	0.6%	
International	3	0.2%	11	0.8%	8	0.5%	14	0.9%	9	0.6%	12	0.7%	102	5.9%	
Unknown	55	3.7%	43	3.0%	50	3.4%	33	2.2%	44	2.8%	50	3.0%	42	2.4%	
Pacific Islander	0	0.0%	0	0.0%	0	0.0%	0	0.0%	0	0.0%	1	0.1%	0	0.0%	
Multiracial	0	0.0%	0	0.0%	0	0.0%	0	0.0%	0	0.0%	5	0.3%	34	2.0%	
TOTAL	1,495	100.0%	1,444	100.0%	1,458	100.0%	1,485	100.0%	1,597	100.0%	1,679	100.0%	1,717	100.0%	

150,000
140,000
130,000
120,000
110,000
100,000
90,000
80,000
70,000
60,000

Semester Credit Hours Level

Fall 2000 160 HX A O ò r- OE R6 •...%,^#9-2B... 4 •au'rif

Semester Credit Hour Summary

by College and Level

	Fall 2006		Fall 2007		Fall 2008		Fall 2009		Fall 2010		Fall 2011		Fall 2012	
	Total	%	Total	%	Total	%	Total	%	Total	%	Total	%	Total	%
Art & Sciences														
Undergraduate	61,091	97.7%	59,245	97.3%	58,210	97.3%	64,840	97.6%	67,558	96.9%	68,071	97.1%	67,297	96.2%
Graduate	1,468	2.3%	1,629	2.7%	1,626	2.7%	1,595	2.4%	2,173	3.1%	2,049	2.9%	2,647	3.8%
TOTAL	62,559	100.0%	60,874	100.0%	59,836	100.0%	66,435	100.0%	69,731	100.0%	70,120	100.0%	69,944	100.0%
Business														
Undergraduate	11,872	93.7%	11,682	92.8%	12,358	93.8%	11,635	90.7%	10,855	88.8%	10,713	89.9%	10,451	89.6%
Graduate	802	6.3%	912	7.2%	810	6.2%	1,195	9.3%	1,373	11.2%	1,198	10.1%	1,207	10.4%
TOTAL	12,674	100.0%	12,594	100.0%	13,168	100.0%	12,830	100.0%	12,228	100.0%	11,911	100.0%	11,658	100.0%
College Readiness														
Undergraduate	3,897	100.0%	4,053	100.0%	4,539	100.0%	4,833	100.0%	4,788	100.0%	4,890	100.0%	4,848	100.0%
Masters	0	0.0%	0	0.0%	0	0.0%	0	0.0%	0	0.0%	0	0.0%	0	0.0%
Doctoral	0	0.0%	0	0.0%	0	0.0%	0	0.0%	0	0.0%	0	0.0%	0	0.0%
TOTAL	3,897	100.0%	4,053	100.0%	4,539	100.0%	4,833	100.0%	4,788	100.0%	4,890	100.0%	4,848	100.0%
Education														
Undergraduate	11,649	81.6%	11,302	71.7%	10,505	34.3%	11,530	49.0%	11,880	38.0%	12,015	53.1%	10,883	34.5%
Graduate	2,625	18.4%	4,452	28.3%	20,115	65.7%	12,018	51.0%	19,392	62.0%	10,617	46.9%	20,656	65.5%
TOTAL	14,274	100.0%	15,754	100.0%	30,620	100.0%	23,548	100.0%	31,272	100.0%	22,632	100.0%	31,539	100.0%
Engineering														
Undergraduate	3,398	56.6%	4,022	54.1%	4,242	52.6%	4,502	52.5%	4,487	60.1%	4,397	68.5%	4,711	73.3%
Graduate	2,604	43.4%	3,409	45.9%	3,825	47.4%	4,078	47.5%	2,984	39.9%	2,021	31.5%	1,713	26.7%
TOTAL	6,002	100.0%	7,431	100.0%	8,067	100.0%	8,580	100.0%	7,471	100.0%	6,418	100.0%	6,424	100.0%
Fine Arts & Communications														
Undergraduate	12,696	92.7%	12,573	93.8%	13,019	93.7%	13,403	93.4%	14,072	91.9%	14,649	92.7%	14,574	92.2%
Graduate	994	7.3%	835	6.2%	868	6.3%	954	6.6%	1,240	8.1%	1,146	7.3%	1,234	7.8%
TOTAL	13,690	100.0%	13,408	100.0%	13,887	100.0%	14,357	100.0%	15,312	100.0%	15,795	100.0%	15,808	100.0%
University														
Undergraduate	104,603	92.5%	102,877	90.2%	102,873	79.1%	110,743	84.8%	113,640	80.7%	114,735	87.1%	112,764	80.0%
Graduate	8,493	7.5%	11,237	9.8%	27,244	20.9%	19,840	15.2%	27,162	19.3%	17,031	12.9%	27,457	19.6%
TOTAL	113,096	100.0%	114,114	100.0%	130,117	100.0%	130,583	100.0%	140,802	100.0%	131,766	100.0%	140,221	100.0%

by College and Location

	Fall 2006		Fall 2007		Fall 2008		Fall 2009		Fall 2010		Fall 2011		Fall 2012	
	Total	%	Total	%	Total	%	Total	%	Total	%	Total	%	Total	%
Art & Sciences														
OnlineSCH	1,693	2.7%	3,156	5.2%	4,349	7.3%	6,445	9.7%	8,346	12.0%	9,270	13.2%	10,105	14.4%
TraditionalSCH	60,866	97.3%	57,718	94.8%	55,487	92.7%	59,990	90.3%	61,385	88.0%	60,861	86.8%	59,845	85.6%
TOTAL	62,559	100.0%	60,874	100.0%	59,836	100.0%	66,435	100.0%	69,731	100.0%	70,131	100.0%	69,950	100.0%
Bines														
OnlineSCH	0	0.0%	333	2.6%	1,186	9.0%	1,712	13.3%	1,594	13.0%	1,614	13.6%	2,327	20.0%
TraditionalSCH	12,674	100.0%	12,261	97.4%	11,982	91.0%	11,118	86.7%	10,634	87.0%	10,297	86.4%	9,331	80.0%
TOTAL	12,674	100.0%	12,594	100.0%	13,168	100.0%	12,830	100.0%	12,228	100.0%	11,911	100.0%	11,658	100.0%
Developmental Studies														
OnlineSCH	0	0.0%	0	0.0%	21	0.5%	45	0.9%	234	4.9%	390	8.0%	477	9.8%
TraditionalSCH	3,897	100.0%	4,053	100.0%	4,518	99.5%	4,788	99.1%	4,554	95.1%	4,500	92.0%	4,371	90.2%
TOTAL	3,897	100.0%	4,053	100.0%	4,539	100.0%	4,833	100.0%	4,788	100.0%	4,890	100.0%	4,848	100.0%
Education														
OnlineSCH	1,047	7.3%	1,377	8.7%	19,228	62.8%	11,176	47.5%	18,741	59.9%	10,777	47.6%	20,709	65.7%
TraditionalSCH	13,227	92.7%	14,377	91.3%	11,392	37.2%	12,372	52.5%	12,531	40.1%	11,855	52.4%	10,830	34.3%
TOTAL	14,274	100.0%	15,754	100.0%	30,620	100.0%	23,548	100.0%	31,272	100.0%	22,632	100.0%	31,539	100.0%
Engineering														
OnlineSCH	78	1.3%	87	1.2%	183	2.3%	273	3.2%	378	5.1%	519	8.1%	897	14.0%
TraditionalSCH	5,924	98.7%	7,344	98.8%	7,884	97.7%	8,307	96.8%	7,093	94.9%	5,899	91.9%	5,527	86.0%
TOTAL	6,002	100.0%	7,431	100.0%	8,067	100.0%	8,580	100.0%	7,471	100.0%	6,418	100.0%	6,424	100.0%
Fine Art & Communications														
OnlineSCH	176	1.3%	608	4.5%	750	5.4%	945	6.6%	876	5.7%	1,152	7.3%	1,476	9.3%
TraditionalSCH	13,514	98.7%	12,800	95.5%	13,137	94.6%	13,412	93.4%	14,436	94.3%	14,632	92.7%	14,326	90.7%
TOTAL	13,690	100.0%	13,408	100.0%	13,887	100.0%	14,357	100.0%	15,312	100.0%	15,784	100.0%	15,802	100.0%
University Total														
OnlineSCH	2,994	2.6%	5,561	4.9%	25,717	19.8%	20,596	15.8%	30,169	21.4%	23,722	18.0%	35,991	25.7%
TraditionalSCH	110,102	97.4%	108,553	95.1%	104,400	80.2%	109,987	84.2%	110,633	78.6%	108,044	82.0%	104,230	74.3%
TOTAL	113,096	100.0%	114,114	100.0%	130,117	100.0%	130,583	100.0%	140,802	100.0%	131,766	100.0%	140,221	100.0%

Degrees Awarded

Undergraduate Degrees

College and Department	2006 07	2007 08	2008 09	2009 10	2010 11	2011 12
Associate Degrees						
Art & Sciences						
Nursing	29	54	65	47	37	27
Baccalaureate Degrees						
Art & Sciences	335	379	356	388	616	697
Adult Studies	0	0	0	0	0	0
Biology	25	29	44	49	52	31
Chemistry & Biochemistry	0	0	0	0	20	9
Chemistry & Physics	14	12	11	16	0	0
Computer Science	8	8	8	9	5	9
English	22	18	29	28	33	28
Earth & Space Sciences	6	7	1	5	5	7
General Studies	0	0	0	0	118	125
History	19	21	17	19	18	21
Liberal Arts	72	89	125	143	129	175
Mathematics	12	11	11	8	8	9
Nursing	89	114	43	61	102	124
Physics	0	0	0	0	1	3
Political Science	18	23	18	15	17	27
Psychology	50	47	49	35	31	36
Swk/CrimJust/Sociology	76	75	59	60	77	93
Business	241	233	251	232	247	214
Accounting & Business Law	39	38	34	41	55	44
Economics & Finance	43	42	50	43	46	27
Info. Systems & Analysis	68	47	60	65	66	72
Management/Marketing	91	106	107	83	80	71

College and Department	2006 07	2007 08	2008 09	2009 10	2010 11	2011 12	
Education	210	182	193	173	193	203	
Hlth. Kinesiology	50	51	56	55	63	80	
Family& ConsumeScience	52	44	56	52	62	54	
ProfessionaPedagogy	108	87	81	66	68	69	
Engineering	87	99	128	132	127	103	
ChemicaEngineering	14	23	22	27	24	20	
CivilEngineering	15	8	26	15	16	10	
Electrical	u	x	—	H	G	ñ	7

Graduate Degrees

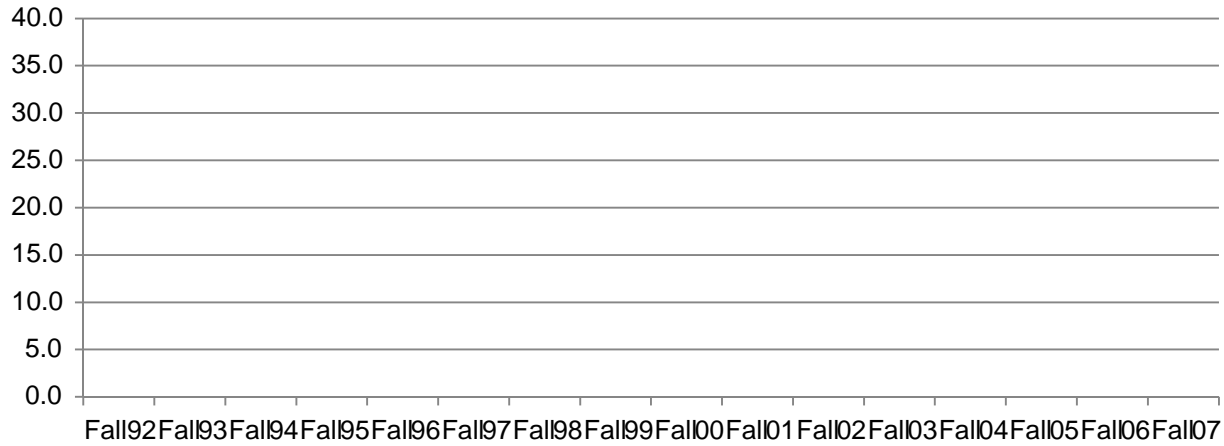
College and Department	2006 07	2007 08	2008 09	2009 10	2010 11	2011 12
Master's Degrees						
Art & Sciences	71	58	50	63	66	76
Biology	2	2	3	4	5	5
Chemistry & Biochemistry	0	0	0	0	13	19
Chemistry & Physics	8	8	10	9	0	0
Computer Science	31	25	19	23	11	15
English	4	3	5	5	8	8
History	6	1	3	1	0	4
Mathematics	2	1	2	4	3	4
Nursing	5	0	3	2	5	6
Political Science	5	2	5	3	8	6
Psychology	2	11	0	8	10	3
SSCJ	6	5	0	4	3	6
Business						
Accounting & Business Law	41	46	43	48	63	83
Info. Systems & Analysis	0	0	0	0	5	14
Management/Marketing	41	46	43	48	58	69
Education						
Counseling & Spec Populations	92	77	1242	2468	1865	1267
Educational Leadership	0	0	0	0	0	1
Family & Consumer Science	82	73	1,039	2,072	1,608	1,132
Hlth. Kinesiology	7	3	9	10	7	13
Professional Pedagogy	3	1	11	7	8	11
	0	0	183	379	242	110
Engineering						
Chemical Engineering	146	208	157	191	270	126
Civil Engineering	38	46	40	43	53	33
Electrical Engineering	43	45	31	36	30	22
Industrial Engineering	16	54	49	74	112	25
Mechanical Engineering	27	17	8	10	24	11
	22	46	29	28	51	35

College and Department	2006 07	2007 08	2008 09	2009 10	2010 11	2011 12
Fine Art	46	48	36	35	37	41



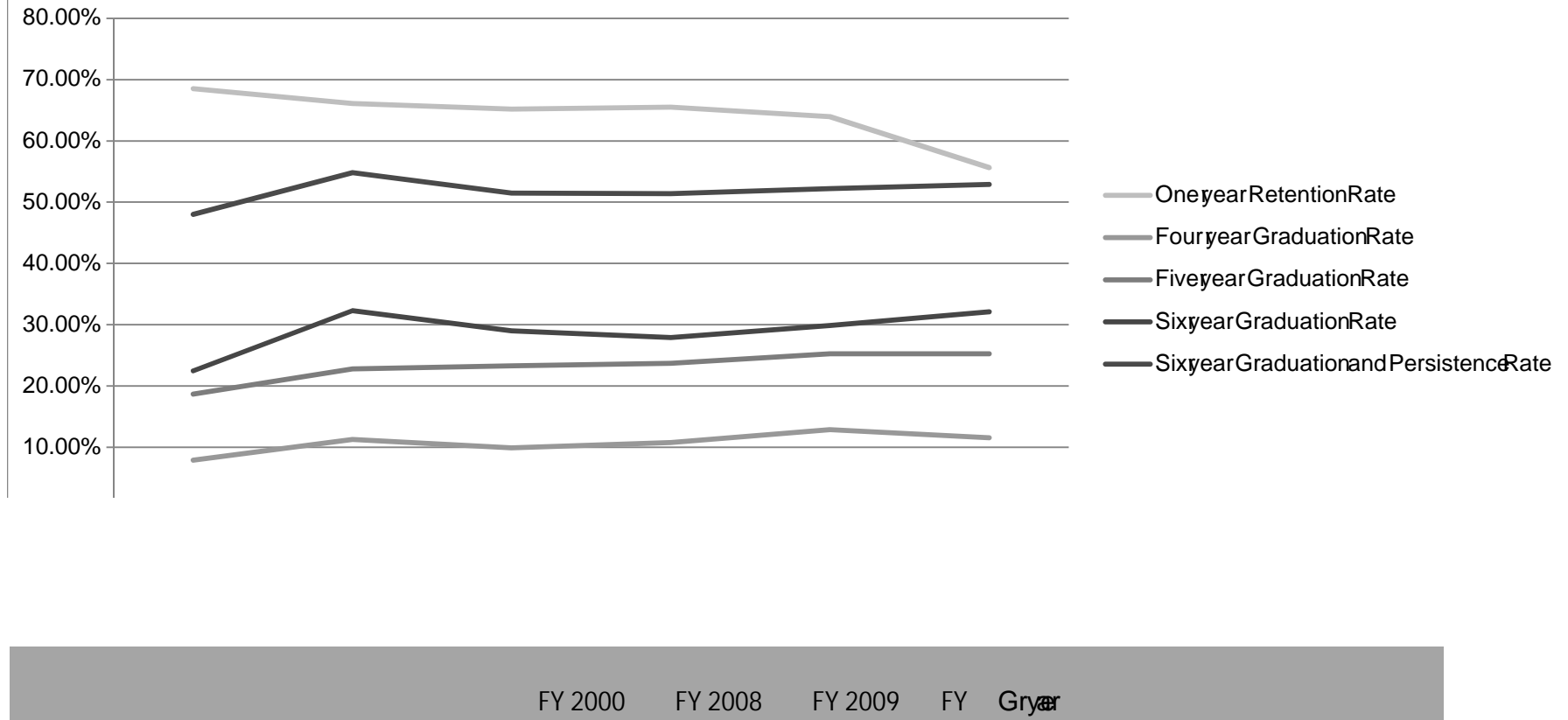
Graduation Rate Data

4, 5, 6 Year



Graduation Rates

Graduation, Retention and Persistence Rates



Teaching Fraction	%	N	%	N	%	N	%	N	%	N	%	N	%	N	%
<25%		54	9.7%	80	14.1%	92	16.4%	35	6.0%	94	15.7%	87	15.0%	94	15.1%
25%TO49%		67	12.0%	62	11.0%	61	10.9%	71	12.2%	48	8.0%	43	7.4%	76	12.2%
50%TO74%		77	13.8%	41	7.2%	39	7.0%	73	12.5%	42	7.0%	48	8.3%	47	7.5%
75%TO89%		19	3.4%	10	1.8%	10	1.8%	13	2.2%	9	1.5%	5	0.9%	6	1.0%
90%TO100%		340	61.0%	373	65.9%	359	64.0%	391	67.1%	407	67.8%	398	68.5%	401	64.3%
TOTAL		557	100.0%	566	100.0%	561	100.0%	583	100.0%	600	100.0%	581	100.0%	624	100.0%

by Tenure Status

Tenure Status	Fall 2006				Fall 2007				Fall 2008				Fall 2009			
	N	%	N	%	N	%	N	%	N	%	N	%	N	%		
Tenured	214	38.4%	205	36.2%	195	34.8%	197	33.8%	197	32.8%	224	38.6%	209	33.5%		
On Tenure Track	76	13.6%	82	14.5%	88	15.7%	96	16.5%	106	17.7%	68	11.7%	81	13.0%		
Non Tenured	267	47.9%	279	49.3%	278	49.6%	290	49.7%	297	49.5%	289	49.7%	334	53.5%		
TOTAL	557	100.0%	566	100.0%	561	100.0%	583	100.0%	600	100.0%	581	100.0%	624	100.0%		

Ethnicity	N	%	N	%	N	%	N	%	N	%	N	%	N	%
White	449	80.6%	450	79.5%	454	80.9%	463	79.4%	472	78.7%	453	78.0%	482	77.2%
Black	35	6.3%	33	5.8%	25	4.5%	25	4.3%	33	5.5%	27	4.6%	39	6.3%
Hispanic	14	2.5%	16	2.8%	16	2.9%	19	3.3%	20	3.3%	21	3.6%	25	4.0%
Asian/Pacific Islander	58	10.4%	66	11.7%	66	11.8%	67	11.5%	64	10.7%	73	12.6%	62	9.9%
Am														



Tenure Status	Fall 2006	Fall 2007	Fall 2008	Fall 2009	Fall 2010	Fall 2011	Fall 2012
Tenured	180.99	176.79	180.48	194.4	187.25	211.00	199.50
On Tenure Track	71.66	78.49	86.25	94.75	105.00	65.00	77.50
Non Tenured	165.36	157.71	172.31	187.1	172.12	175.55	186.91
TOTAL	418.01	412.99	439.04	473.80	464.37	451.55	463.91

Rank	Fall 2006	Fall 2007	Fall 2008	Fall 2009	Fall 2010	Fall 2011	Fall 2012
Professor	90.28	88.00	87.50	93.50	88.75	89.00	80.50
Associate							

TENURED Faculty Characteristics

Fall Semesters

by Gender

Gender	Fall 2006		Fall 2007		Fall 2008		Fall 2009		Fall 2010		Fall 2011		Fall 2012	
	N	%	N	%	N	%	N	%	N	%	N	%	N	%
Male	140	65.4%	134	65.4%	129	66.2%	128	65.0%	129	65.5%	145	64.7%	136	65.1%
Female	74	34.6%	71	34.6%	66	33.8%	69	35.0%	68	34.5%	79	35.3%	73	34.9%
TOTAL	214	100.0%	205	100.0%	195	100.0%	197	100.0%	197	100.0%	224	100.0%	209	100.0%

by Ethnicity

Ethnicity	Fall 2006		Fall 2007		Fall 2008		Fall 2009		Fall 2010		Fall 2011		Fall 2012	
	N	%	N	%	N	%	N	%	N	%	N	%	N	%
White	177	82.7%	166	81.0%	162	83.1%	162	82.2%	162	82.2%	178	79.5%	168	80.4%
Black	8	3.7%	8	3.9%	5	2.6%	6	3.0%	6	3.0%	6	2.7%	6	2.9%
Hispanic	3	1.4%	3	1.5%	2	1.0%	3	1.5%	2	1.0%	3	1.3%	3	1.4%
Asian/Pacific Islander	26	12.1%	28	13.7%	26	13.3%	25	12.7%	26	13.2%	37	16.5%	31	14.8%
Am Indian/Alaskan	0	0.0%	0	0.0%	0	0.0%	0	0.0%	0	0.0%	0	0.0%	0	0.0%
Non Resident	0	0.0%	0	0.0%	0	0.0%	1	0.5%	1	0.5%	0	0.0%	1	0.5%
TOTAL	214	100.0%	205	100.0%	195	100.0%	197	100.0%	197	100.0%	224	100.0%	209	100.0%

by Rank

Rank	Fall 2006		Fall 2007		Fall 2008		Fall 2009		Fall 2010		Fall 2011		Fall 2012	
	N	%	N	%	N	%	N	%	N	%	N	%	N	%
Professor	106	49.5%	101	49.3%	97	49.7%	99	50.3%	96	48.7%	98	43.8%	87	41.6%
Associate Professor	67	31.3%	66	32.2%	67	34.4%	71	36.0%	73	37.1%	100	44.6%	100	47.8%
Assistant Professor	39	18.2%	37	18.0%	30	15.4%	27	13.7%	28	14.2%	26	11.6%	22	10.5%
Instructor	2	0.9%	1	0.5%	1	0.5%	0	0.0%	0	0.0%	0	0.0%	0	0.0%
Other	0	0.0%	0	0.0%	0	0.0%	0	0.0%	0	0.0%	0	0.0%	0	0.0%
TOTAL	214	100.0%	205	100.0%	195	100.0%	197	100.0%	197	100.0%	224	100.0%	209	100.0%